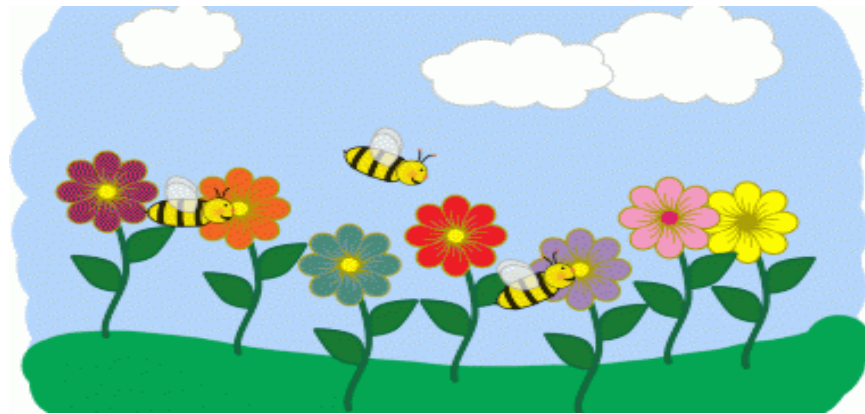


Essex/Hudson County 4-H Spring Fair Project Exhibit Booklet



Dear 4-H members and Essex County Community Members,

We would like to invite you and your families to the Essex/Hudson County 4-H Spring Fair. The fair will be held on Saturday, April 29th from 11AM to 4PM. All Essex County youth are welcome to participate!

This booklet provides detailed information about submission of project entries. Youth can submit projects in any of the fall divisions including: Photography, Arts and Crafts, and Environmental Education. We will collect submissions for projects to be showcased at Garibaldi Hall on Friday, April 28th between 3:00 and 5:00pm or on April 29th between 8:30 and 9:30am. On Saturday morning the projects will be judged based on the Danish judging system and all projects will receive a ribbon and written recognition. The "Best of Division" award winners may even win a small cash award! All projects will be showcased for families and community members to enjoy.

We look forward to seeing you and your families at the Essex County Environmental Earth Day Event. Please remember to stop by the 4-H activity station and say hello. If you are interested in learning more about our 4-H program or how you can get involved in more 4-H projects, please call the office @ 973-353-1337. We are looking forward to a great fair this year!

Yours in 4-H,

Marissa Blodnik
4-H Program Associate

Marissa Blodnik



4-H Judging

4-H JUDGING uses the Danish system in which each item is evaluated against a standard. Therefore, many exhibits will receive Excellent, Very Good, or Good ratings. If there are three or more entries, one exhibit in each Division or Class may receive a rosette.

The Purpose of Competition is to allow the participants to be recognized for their work and take part in a POSITIVE LEARNING EXPERIENCE!

What do Ratings We Use and What do They Mean?

- **Excellent:** Outstanding work, meets at least 90% of the criteria.
- **Very Good:** Well done, needs a little improvement.
- **Good:** Good effort, project entry did not follow guidelines
- **Cloverbud:** Will only be judged for participation and will receive Cloverbud Ribbon per project entry.
- **Best in Division*:** Best overall project for the division
- **Best in Class*:** Best overall project for the class

* All Best in Division projects will be awarded a \$5 premium and Best in Class will be awarded \$3. Premiums will be awarded at the Annual Achievement Ceremony.

Project Entry Guideline

All Essex County Youth ages K-13 (one year out of high school) may enter projects. Cloverbud members and Youth grades K-3, may enter any division, but will only be judged for participation and will receive Cloverbud Ribbon per project entry.

Individuals can enter up to 3 projects per class and there is no maximum for entries per division.

Projects can come from 4-H clubs, school projects, camps, home activities, or any other learning environment as long as completed by the youth exhibiter.

Project Drop-off is Friday the night before fair between 3 and 5pm or Saturday the day of fair between 8:30 and 9:30 am. Any exhibits arriving after that will be displayed but will NOT be judged.

Exhibitor Tags must accompany all entries. Participants can contact the 4-H office for fair tags or tags can be completed during drop-off.

Project removal is asked after 3:45 pm and before 4:15 pm on the day of fair. Project that left behind will be sent to the 4-H office.

Fall Project Divisions include; Fruits & Vegetables, Outdoor/Indoor Gardening, and Food & Nutrition.

Spring Project Divisions include; Technology, Writing, Arts and Crafts, Environmental Education, Photography, Indoor Gardening and Small Animals

The 4-H Association will not be liable for damage or loss due to fire, theft or any cause whatsoever and the exhibitor shall hold the 4-H Association blameless for any loss and upon this condition **ONLY** are all entries and exhibits accepted.

DIVISION III – INDOOR GARDENING

Rules:

- Indoor gardening projects may be presented in a vase, pot, or plated for display
- Exhibitor may enter up to 3 different varieties in each class
- See Environmental Education division for plant science projects

House Plants

1. Mature African Violet plant
2. Any other flowering plant – 1 of each variety
3. Any other foliage plant – 1 of each variety
4. Two rooted cuttings – flowering plant
5. Two rooted cuttings – foliage plant
6. One young flowering plant, less than 1 year old
7. One young foliage plant, less than 1 year old
8. Cacti
9. Succulents

Dish Gardens

10. Woodland or field and meadow materials
11. Desert material
12. Tropical dish garden



Terrariums

13. Tropical plant material
14. Woodland plant material

Flower Arrangements

15. Garden arrangement in bright shades
16. Garden arrangement in pastel shades
17. Flowers and foliage in a kitchen utensil
18. Common wild flowers - daises, clovers, grasses, ect.
19. A table centerpiece
20. 4-H arrangement (green and white)
21. Tray Composition of fresh plant materials, no larger than 12'X16"
22. Hanging baskets
23. Arrangements or bouquets made of dried materials
24. Crazy Critters sculptures made of fruits and vegetables
25. Any crafted item made with your dried or pressed flowers.

Other

26. Any other indoor gardening type project that does not fit in an above class

Judging based on quality / condition of specimens and presentation.

DIVISION V – PHOTOGRAPHY

Rules:

- **Each entry must be MOUNTED by the exhibitor on a sheet of poster board or card stock**
 - **Each entry must include an explanatory caption in the lower left front of the poster board**
 - **Unless otherwise state, pictures should not be larger than 5x7**
 - **Class 13 entries must include a print out of the contest criteria**
 - **Class 14 entries must be un-matted and can be from the prior year Essex County Parks System Photography Contest or for submission in the current year contest.**
1. Five pictures on the same subject
 2. Four pictures of different subjects, one each of buildings, people, animals or birds and 1 landscape/seascape
 5. One black and white or color enlargement, any shape, not to exceed 8X10"
 6. Five pictures using a flash
 7. Three action pictures
 8. Sequence of two pictures reporting any project, e.g., before and after
 9. Sequence of three to five "how- to-do" pictures
 10. Picture Story of 8 to 15 pictures with narrative script
 11. Special Effects – one picture made by unusual photo techniques
 12. A print – may be up to 8 1/2' x 11"
 13. Find an online photography challenge and complete
 14. Two un-matted pictures taken in the Essex County Parks System submitted in 8x10 format
 15. Two selfies of you and your best friends
 16. Two selfies of you and a friend at a 4-H club or activity
 17. Two selfies of you and your pet



Judging based on story telling ability, photographic quality and presentation.

DIVISION VI – ARTS AND CRAFTS

1. A Ceramic or Acrylic Article
2. A Crocheted Article
3. A Holiday Decoration
4. A Hooked Article
5. A Knitted Article
6. A Macramé or String Article
7. A Sketch Book
8. A hand sketched fashion design
9. A hand made article of clothing
10. Pastels
11. Pencil/Charcoal Sketch
12. Picture - From a Kit
13. Shrink Art
14. Animal Art
15. Painting, Oil – Copy
16. Painting, Oil – Original
17. Painting, – Water Color-Copy
18. Water Color – Original
19. Any Molded Article-Plaster, Plastic, Salt Dough Clay, etc
20. Any Woven Article
21. Basketry
22. Candles– Homemade or Decorated
23. Collage
24. Craft Item - 75% or More Recycled Material
25. Picture or Diorama
26. Decoupage
27. Egg Decorating – Interior or Exterior (real or fake egg)
28. Leather Article
29. Metal Article – From a Kit
30. Metal Article – Original
31. Mobiles (any Materials)
32. Paper Craft
33. Silk Screen Print
34. Styrofoam Article
35. Jewelry
36. Tinsel Painting
37. Tile Article
38. Any Other Craft Article Made at a 4-H Meeting
39. Any Other Craft Article that does not Fit in another Category
40. Glass Article, Self Made
41. Glass Blown Article
42. Glass Mosaic
43. Glass Art
44. A Tie Dyed Item
45. A Decorated Article of Clothing



DIVISION VII – ENVIRONMENTAL EDUCATION

Animal Science

1. A poster of a life cycle of an animal
2. A poster of facts for animal care (may submit multiple for different animals).

Forestry

3. Collection of five or more named twigs, leaves, fruits, wood blocks, or bark
4. Collection of all the above for three or more tree species, with several interesting facts about each tree
5. Other forestry- related item, poster, or display

Conservation

6. Collection of five or more grasses, wildflower or weeds, named (photos are OK if taken by member).
7. Scrapbook of five or more native wild animals
8. Collection of at least three plaster animal track casts, each one named
9. Endangered species scrapbook or poster
10. Other wildlife-related item, poster, or display
12. Chart of major bird families native to New Jersey
11. Homemade bird house
13. Scrapbook of five or more birds
14. Other bird – related item, poster or display

Entomology

15. Collection box with five or more insect/arthropod properly labeled
16. A poster of facts about your favorite insects/arthropod
17. . Model (not from a kit) of insect or other arthropod. Must have correct number of body parts!

Earth Science

18. Collection of five or more NJ rock and mineral specimens, properly

labeled

19. A working model of a volcano, with explanation of how a real volcano works

Marine Science

20. Collection of five or more sea shells found in New Jersey, properly labeled.

Recycling

21. Invent/design a creative, useful, original item from one or more recyclable item
22. Display that shows ways to recycle, reuse, and/or reduce waste

Soil Science

23. A poster presentation of data from a local soil sample test
24. A sample of 3 different soil types (must be labeled with type and location)

Plant Science

25. Seedlings germinated less than 2 weeks (plant type must be listed)
NEW*
- 26.. Seedlings germinated more than 2 weeks (plant type must be listed)
NEW*
27. Forced spring bulbs NEW*
28. Forced spring bushes or tree flowers NEW*

Other

29. A poster presentation sharing a collection of environmental data
30. Any other environmental education project you are proud of



Judging based on quality of specimens and materials, information, and creativity.

DIVISION VIII– SMALL ANIMALS

Rules:

- Any youth who cares for their own animal(s) or at-least weekly for another animal(s) may enter
- Only clean, healthy entries will be accepted for exhibit
- Provide your own cage, crate, tank or bowl, feed and water containers
- All Small Animal exhibitors must notify the 4-H office at least a week prior to the fair
- Please contact the 4-H office one week prior to the fair to inform for the appropriate animal health form.



Classes

1. Chick
2. Pullet/ Cockerel (4 months or older)
3. Hen
4. Cock
5. Bantam
6. Pigeon
7. Rabbit
8. Duck
9. Goose
10. Gerbil
11. Guinea pig (mature)
12. Hamster
13. Reptile or amphibian
14. Tropical fish
15. Bird
16. Cat
17. Dog
18. Goat
19. Other animals

DIVISION IX - WRITING

Rules:

- All writing must be original
- All written entries must be typed or hand written very neatly



POETRY

1. Free verse
2. Haiku
3. Limerick
4. Sonnet
5. Cinquain

6. Diamante
7. Other form of poetry

SONG/BALLAD

8. Song or ballad

SHORT STORY

9. Short story
10. Original story character – design the character and type up a description and background story for the character
NEW

PROFESSIONAL WRITING

11. Letter
12. Resume
13. Report
14. Other professional writing

Other

15. A creative piece describing, “Why I love 4-H” NEW*
16. A creative piece honoring an adult you admire NEW*
17. Other writing pieces not listed

Judging based on language and formatting, style, and creativity.

DIVISION X - TECHNOLOGY

Rules:

- **Digital items should be emailed to essex4h@njaes.rutgers.edu by the end of business day Friday before the fair. Please send email with subject: Member name, technology project.**
- **Computer-based presentations can be printed out or put on a memory stick or provide the computer to display entries**

Classes

ROCKETS

1. Rocket – from a kit
2. Rocket - original

ELECTRICAL PROJECTS

3. Electric article – from a kit
4. Electric article - original

MOTORIZED PROJECTS

5. Motorized article – from a kit
6. Motorized article - original

ROBOTICS

7. Robotics article – from a kit
8. Robotics article - original
9. Robotics article – from a kit - Team
10. Robotics article - Team original

DIGITAL Creations

11. Powerpoint presentation – Individual

12. Powerpoint presentation – Team
13. Animation – Individual
14. Animation – Team
15. Video – Individual
16. Video – Team
17. Social Networking site – Individual
18. Social Networking site – Team
19. Flyer, brochure, or other promotional item – Individual
20. Flyer, brochure, or other promotional item – Team
21. Blog – Individual
22. Blog – Team
23. Miscellaneous

LEGO

24. From a set – individual
25. From a set – team
26. Original - individual
27. Original - team
28. Motorized, set – individual
29. Motorized, set – team
30. Motorized, original build – individual
30. Motorized, original build - team
31. Misc. Lego

Other

32. Any other technology project you are proud of



Judging based on
information, creativity/
originality and presentation.

DIVISION XII Club Booth Display

Rules:

For 4-H clubs only

Every 4-H Club Should have a club exhibit at the 4-H Fair!

All club exhibits will be judged. They also make the 4-H Fair more interesting to both the 4-H families and the public. Most important it is a way to showoff all the great work you do!

Your club exhibit should:

- Tell about 4-H and encourage someone to joining
- Tell about projects your club participates
- Be made by your 4-H members
- Can display a sample project in front of your poster
- Include your 4-H club name
- Details on how to join your club- club leader email or county 4-H email:
Essex4h@njaes.rutgers.edu or
Hudson4h@njaes.rutgers.edu
- Your exhibit should include a poster or tri-fold
- May use the same poster every year updated with new members and highlights
- Include a 4-H clover somewhere on the poster (Rutgers Logo is optional)



Judging based on information, creativity/ originality and presentation.



ARTISTS WANTED!

DESIGN THE 4-H FAIR PROGRAM COVER



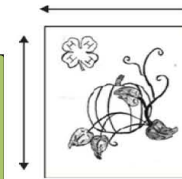
All 4-H members may enter

This is your chance to help promote the fair theme for this year!

Spring 2017 Theme: Nature and Enjoyment

What to submit:

- Only use pencil
- Vertical format
- Size = 4.25" x 5.5 " (quarter sheet of paper)
 - No Words
 - Include 4-H Clover
 - Must be Hand Drawn



Entries will be judged on : Theme design (35 points) Neatness (35 points)
Theme message (20 points) 4-H Clover (10 points)

Cloverbud members (grades K-3) may participate, but will not be judged

The winning entry will be put on the Essex County 4-H Fair Cover and receive a \$25 Check at the Achievement Ceremony

Put your name, club, and current grade in school on the back of your submission.

Mail: Essex County 4-H Youth Development
162 Washington St
Newark, NJ 07102

FAX: 973-353-1430

Due by April 20th

4-H is a community of young people across America who are learning leadership, citizenship and life skills. The New Jersey 4-H Youth Development Program offers everyone in grades K–12, the opportunity to explore countless opportunities in science, arts, foods, outdoor adventure and more. 4-H is where there's fun in learning and learning is fun! Contact our office for more information about youth programs and volunteer opportunities.



RUTGERS
THE STATE UNIVERSITY
OF NEW JERSEY

ESSEX COUNTY 4-H OFFICE

162 WASHINGTON ST.

NEWARK, NJ 07102

ESSEX4H@NJAES.RUTGERS.EDU

PHONE: (973)353-1337

FAX: (973)353-1430

ESSEX.NJAES.RUTGERS.EDU/4H



Cooperating Agencies: Rutgers, The State University of New Jersey, U.S. Department of Agriculture, and County Board of Chosen Freeholders. Rutgers Cooperative Extension, a unit of the Rutgers New Jersey Agricultural Experiment Station, is an equal opportunity program provider and employer.